

# Technical data sheet

## Product features



### Gas stove with gas oven

<b>Model</b>	<b>SAP Code</b>	00020643
--------------	-----------------	----------



- Device type: Gas unit
- Ignition: Piezo + Eternal Flame
- Type of internal part of the appliance 1 (eg oven): Gas
- Type of internal part of the appliance 2 (eg oven): Static
- Material: AISI 304 top plate and cladding

<b>SAP Code</b>	00020643	<b>Power gas [kW]</b>	46.600
<b>Net Width [mm]</b>	1200	<b>Type of gas</b>	Natural gas, propane butane
<b>Net Depth [mm]</b>	730	<b>Type of internal part of the appliance 1 (eg oven)</b>	Gas
<b>Net Height [mm]</b>	900	<b>Type of internal part of the appliance 2 (eg oven)</b>	Static
<b>Net Weight [kg]</b>	185.00	<b>Solid top dimensions [mm x mm]</b>	370 x 545

# Technical data sheet

Technical drawing

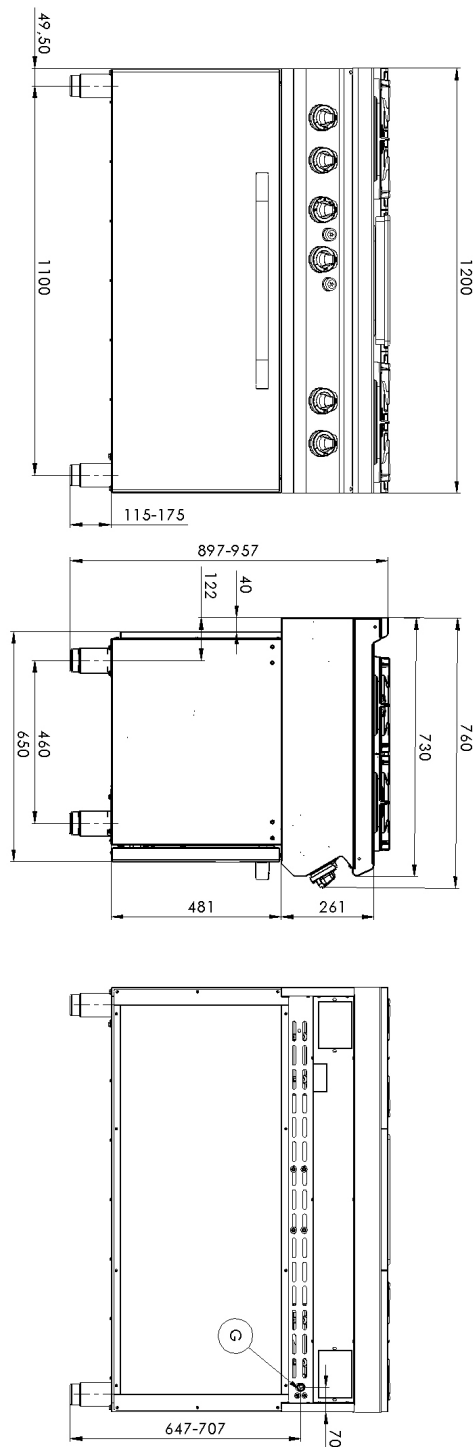


Gas stove with gas oven

Model

SAP Code

00020643



# Technical data sheet

Technical parameters



## Gas stove with gas oven

**Model**

**SAP Code**

00020643

**1. SAP Code:**

00020643

**2. Net Width [mm]:**

1200

**3. Net Depth [mm]:**

730

**4. Net Height [mm]:**

900

**5. Net Weight [kg]:**

185.00

**6. Gross Width [mm]:**

1260

**7. Gross depth [mm]:**

820

**8. Gross Height [mm]:**

1080

**9. Gross Weight [kg]:**

201.00

**10. Device type:**

Gas unit

**11. Construction type of device:**

Stationary

**12. Power gas [kW]:**

46.600

**13. Ignition:**

Piezo + Eternal Flame

**14. Type of gas:**

Natural gas, propane butane

**15. Device color:**

Stainless steel

**16. Material:**

AISI 304 top plate and cladding

**17. Worktop type:**

Molded - comfortable cleaning maintenance

**18. Worktop material:**

AISI 304

**19. Worktop Thickness [mm]:**

1.50

**20. Grid material:**

Cast iron

**21. Service accessibility:**

Trough the frontal panel

**22. Safety thermocouple:**

Yes

**23. Adjustable feet:**

Yes

**24. Number of burners/hot plates:**

5

**25. Type of gas cooking zones:**

Fire protection to install + Classic burners

**26. Burner type:**

Brass, detachable

**27. Oven Type:**

gas static

**28. Oven power electric [kW]:**

10.50

# Technical data sheet

Technical parameters



## Gas stove with gas oven

**Model**

**SAP Code**

00020643

**29. Oven size:**

GN 3x 1/1

**33. Solid top thickness [mm]:**

30

**30. Type of internal part of the appliance 1 (eg oven):**

Gas

**34. Solid top dimensions [mm x mm]:**

370 x 545

**31. Type of internal part of the appliance 2 (eg oven):**

Static

**35. Solid top ignition:**

Piezo + Eternal Flame

**32. Gasket:**

Yes